

2017 BEAVEREE SLEEPOVER



Calling all small Beaver Colonies who are looking to give their youth an opportunity to have a sleepover. In the spirit of the brotherhood of Scouting, Kitchee Lodge has been booked for the upcoming **May 27, 2017 Beaverree**.

Kitchee Lodge sleeps 80 people inside on bunks and lots of inside space for activities if the weather is not favourable. White tails may wish to prepare for Cubaree by sleeping outside in a tent with a few Scouters in their own tents. The Kitchee floor plan and suggested Packing List is within this package.

This sleepover will be run at a break even and requires the deposit to be received by a minimum of **47 paying youth by MARCH 31, 2017** otherwise the cabin will be cancelled & all deposits received to date will be returned.

Cost: Youth - \$ 40 of which a **\$ 25 non-refundable deposit is due by deadline**

Scouters - If sufficient number of youth are registered - Free
- If numbers are insufficient to break even there will be a nominal fee.

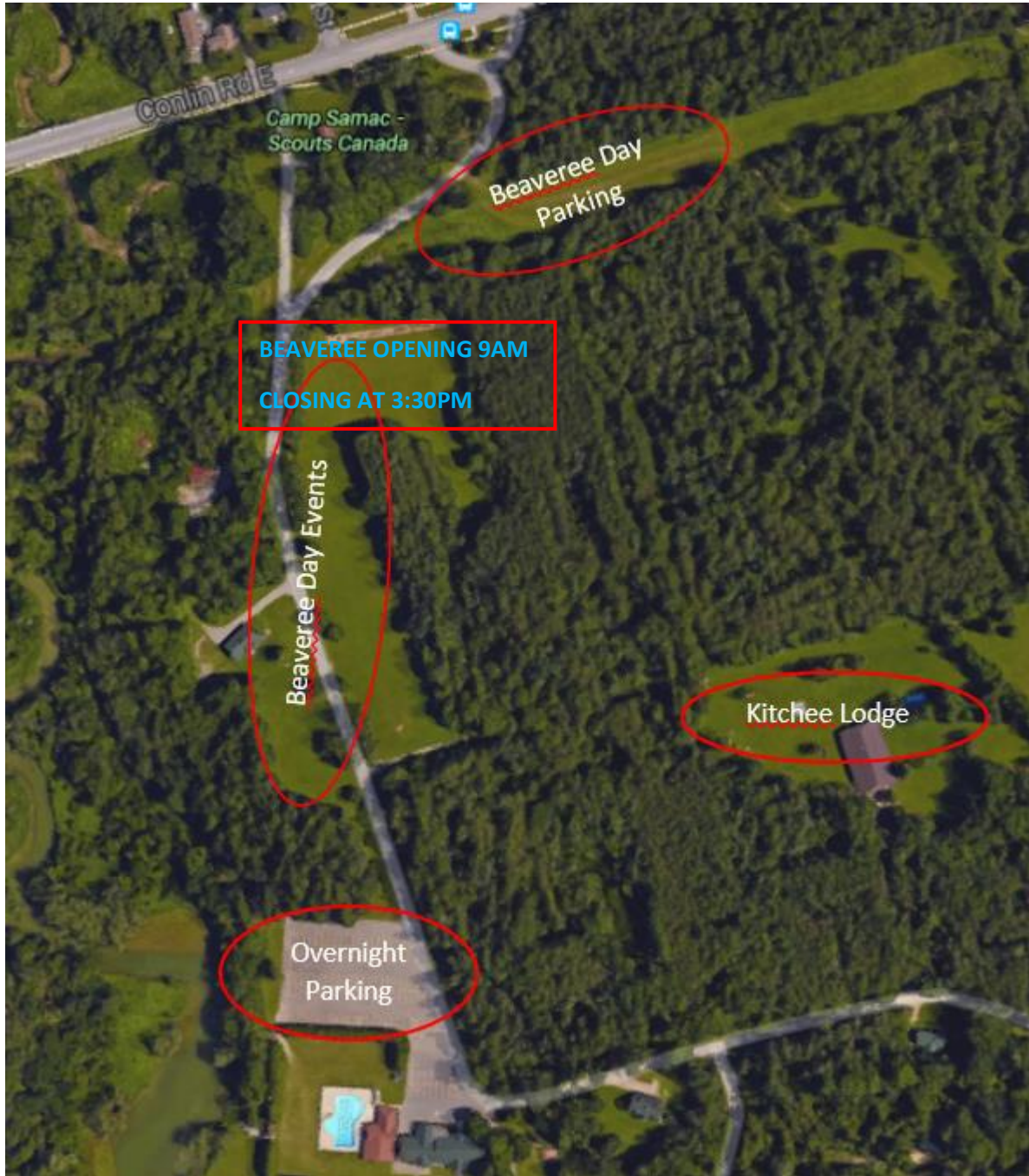
Payment: Group cheque made payable to "**Scouts Canada 7th Ajax**" can be mailed to 2511 Linwood St., Pickering, Ontario L1X 2S4

Deadline: **March 31, 2017**

What's included: Saturday Breakfast, Snacks for Beaverree day, Dinner, Mug up, Sunday Breakfast, Activity/Craft costs.

Contact: Scouter Annette Hayes - cdnhaze@gmail.com
Owasco's Deputy Area Commissioner of Group Support
Cell - 416-910-2494

MAP OF CAMP SAMAC



MAY 27, 2017 Beaveree Sleepover

Camp is for Registered Youth and Scouter(s).

Each group are responsible to:

- Send at least 1 Registered Scouter for your group
- Register their youth for Beaveree via a separate process
- Ensure everyone sleeping over in your group brings a mess kit
- Ensure all Scouters meet Scouts Canada Screening Guidelines
- Ensure they carry the MyScouts Detailed Membership Report for all present participants from your group
- Submit a Camping Activity Form to your own Group Commissioner - I do have First Aid if your attending Scouter doesn't have it.
- Come with 1 activity for all of the youth sleeping over to take turns doing. This would be a craft, activity, etc. will be discussed at planning meeting to be scheduled early April 2017.
- Send a representative to the planning meeting

A camp cook will take care of food for those staying at Kitchee Lodge.

ARRIVAL: Scouters and their own children who have paid for the sleep over can arrive **Friday May 26, 2017, 7-9pm** after dinner.

Sleep over youth from your group arrive **Saturday May 27, 2017, 7:30-8:00am** for Breakfast at Kitchee Lodge.

Day only youth will meet you at your Beaveree opening for **8:50am**.

Once Beaveree Closing Ceremony finishes at 3:30pm head back to Kitchee Lodge to continue the fun.

After dinner we'll head out for a hike and finish the day with a camp fire with all the other Beaver Colonies who are sleeping over in other Camp Samac cabins.

DEPARTURE: Youth depart **Sunday May 28, 2017, 10:30-11am**
Scouters will depart once the facility is cleaned

BEAVEREE SLEEPOVER REGISTRATION

Group Name: _____

Group Contact's Name & Email: _____

Beaver's Name	Male or Female	Current Tail Colour (BR, BL, WH)	Wants to Sleep Inside or Outside	Comments and/or Allergies


Youth Total Deposit \$ 25 x _____ # of youth = \$ _____
by **MAR. 31, 2017**


Adult(s): Number of Registered Scouters = _____


Group cheques payable to **Scouts Canada 7th Ajax** and mailed to 2511 Linwood St., Pickering, ON, L1X 2S4.



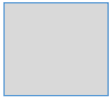
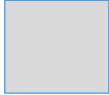
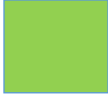


PACKING LIST

Please ensure everything is labelled with your child's name to make it easier during pack up time.


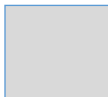


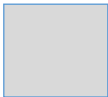


 = Night time items

 = Clothing

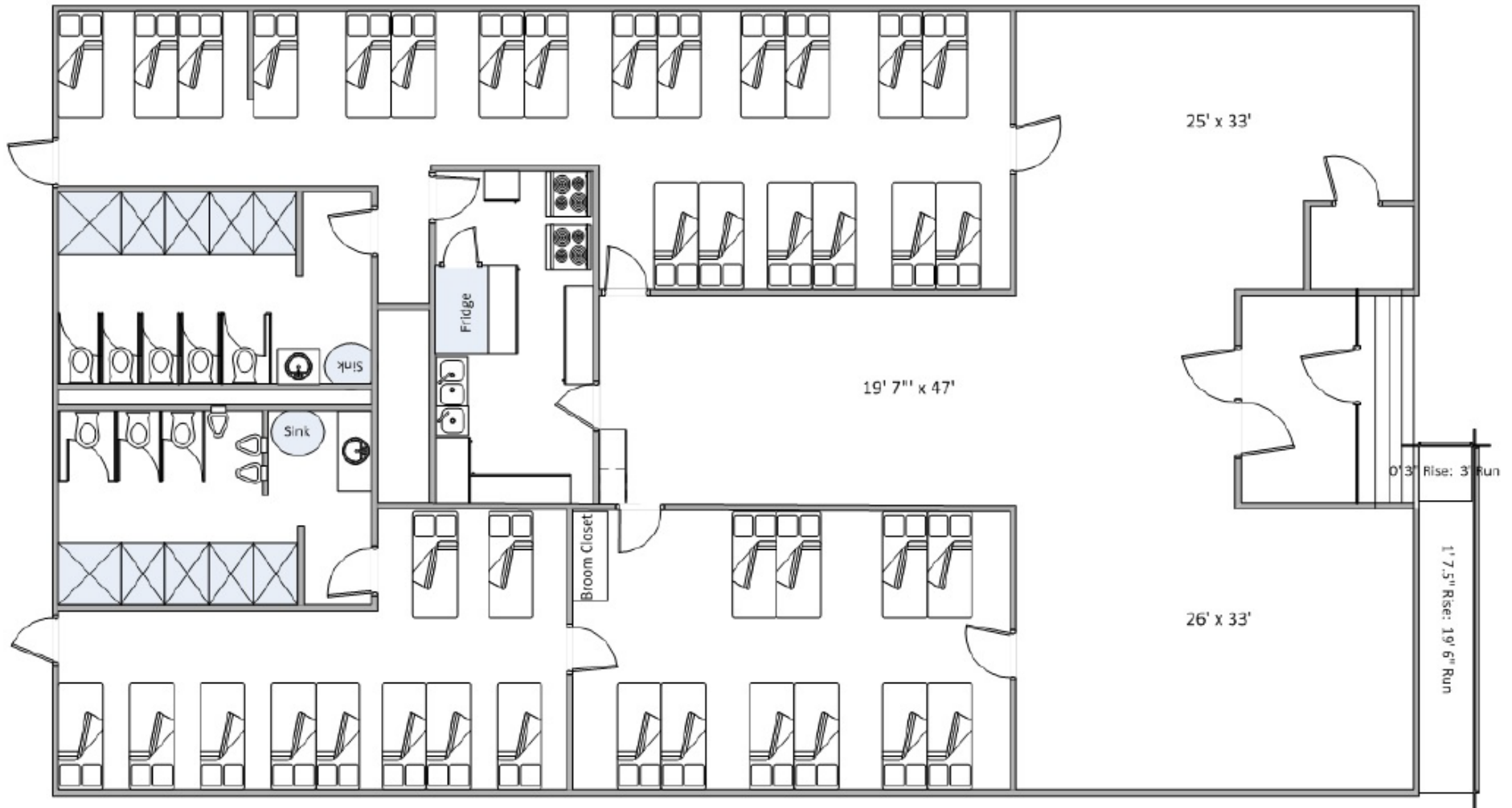
 = Outdoor Items

							
Pajamas (PJs)		Tooth Brush & Paste		Sleeping Buddy		Head Lamp or Flashlight	
							
Pillow		Sleeping Bag		Socks		Underwear	
							
Long Pants		Long Sleeve Shirt		Sweat Shirt		Closed Toe Sandals (optional)	
							
Sunscreen		Bug Spray		Wide Brim Hat		Water Bottle	
							
Wind Breaker (optional)		Mess Kit		Day Pack		Whistle	

Arrive to Beaveree in:

							
T-Shirts		Shorts		Uniform		Running Shoes	

Kitchie Lodge
Kitchie Kaw Sookin Eskayo
Sleeps 80



 Bunk Bed  Shower